

LIFTKING®

LK-630R Telescopic Forklifts



Liftking

LK630R features ergonomic cab and controls



Large service panel for easy access to engine compartment



MOVING YOUR FUTURE

LK•630R Forklifts

STANDARD EQUIPMENT

3 Steering Modes - 2 Wheel, 4 Wheel and Crab, Automatic Load Leveling System, Frame Levelling System; Load Holding Valves on Frame Level, Tilt, Extend and Lift Cylinders; Telescopic 2 Section Boom; Quick Release System, Shaft Mounted Floating Forks; Oscillating Rear Axle; Planetary Front and Rear Axles; Natural Aspirated or Turbo Diesel Engine; Automatically-engaged Disc Parking Lock; Hydraulically Actuated Wet Disc Brakes; Joystick Controls; FOBS Operating Cab, 12V Electrical System; Anti-Vandalism Provisions; Instruments and Warning Lights; Horn and Back-up Alarm; Rear View Mirrors; Adjustable Deluxe Suspension Seat and Seatbelt.

OPTIONAL EQUIPMENT

Boom Overload Sensing System; All Steel Cab with Safety Glass; Front & Rear Wipers; Heater and Defroster Fan; General Purpose Bucket; 4,500 lb Capacity Hydraulic Winch (Boom Mounted); 50.5" Side Tilting Carriage (10° R-L); Dual Fork Positioning Carriages (50.5" & 74"); 10" Truss Boom (W or WO Winch) 2,000 lb Capacity; Roadway Light Package; Work Light Package, 3/4 Cubic Yard Concrete Hopper, 42"-48" and 60" Long Forks.

SPECIFICATIONS

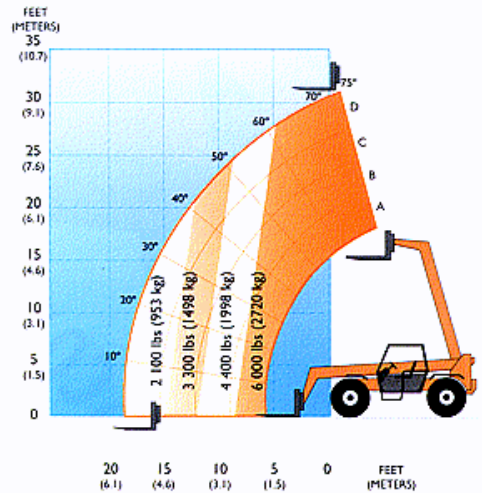
LK•630R

GENERAL

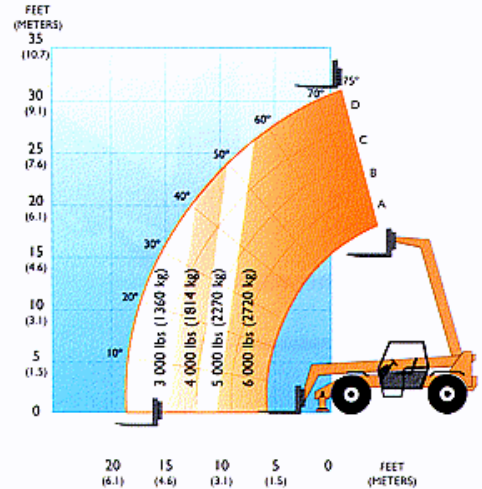
Type of Vehicle	Lifting LK630R Diesel Telescopic Forklift Truck
Manufacturer	Lifting Industries Incorporated
Rated Capacity	6,000 lb (2,721.6 kg) at 24 in (60.1 cm) Load Center
Length (less forks)	19 ft 6 in / 5.9 m
Overall width	96 in / 2.4 m
Turning Radius	12 ft 11 in / 4.0 m
Max. lift height	30 ft / 9.1 m
Overhead Guard Height	96 in / 2.4 m
Ground Clearance	17.5 in / 44 cm
Track	78 in / 2 m
Weight (no load)	20,100 lb / 9,125 kg
Brakes	Internal Wet Disc Hydraulic, 4 wheels
Wheel Base	120 in / 3.0 m
Max. Forward Reach	16.5 ft / 5.0 m
Load at Max. Height	6,000 lb / 2,720 kg
Load at Max. Reach	3,000 lb / 1,360 kg with stabilizers 2,100 lb / 953 kg with no stabilizers
ENGINE:	Turbo Diesel, Perkins, Model 1004-40T, 110hp
TRANSMISSION:	Electronic 3 Speed Powershift Forward / Reverse
AXLES:	Drive Steer, Heavy Duty Planetary, Limited Slip Differential
TIRES:	Tubeless, 13.00-24 TGx 12 Ply Rating

Maximum load capacities at 24 in Load Center for Lift and Reach positions in pound per feet (with metric conversions). Manufacturer's recommended capacity limits for this truck are based in accordance with ANSI B56.6-1992. Variations of load sizes and extended Load Centers must have their center of gravity correspond to the load position limits of these charts.

CAPACITY CHART - NO STABILIZERS



CAPACITY CHART - WITH STABILIZERS



LIFTKING®



7135 Islington Avenue
Woodbridge, Ontario
Canada L4L 1V9
Tel: (905) 851-3988
Fax: (905) 851-6396
info@liftking.com
www.liftking.com
Toll Free: 1 888 LIFTKING



P Series forklifts 4WD, 4WS
Capacity: 6,000 - 50,000 lb
(2,727 - 22,675 kg)



Tag-A-Long forklift
Model LKTAS
Truck Mounted forklifts



M Series forklifts
Capacity: 6,000 - 30,000 lb
Straight Mast 2WD, 4WD

Telescopic Handlers
Capacity: 6,000 - 12,000 lb (2721.6 - 5443.2 kg)



Military-type forklifts
Capacity: Up to 50,000 lb
(22,675 kg)



Your local authorized dealer

The information contained herein is general in nature and it is not intended for specific application purposes. LIFTKING® reserves the right to make changes in specifications shown, herein, and improvements, or discontinue manufacture at any time without notice or obligation.

Re-order Number: 630R0400